









MAP 8: OGDEN VALLEY ACTIVE TRANSPORTATION

Legend

-  Ogden Valley Boundary
-  Lakes
-  Trailhead
-  Proposed Trailhead
-  State Route
-  Local Road
-  Existing Recreation Trail
-  Proposed Recreation Trail

Active Transportation

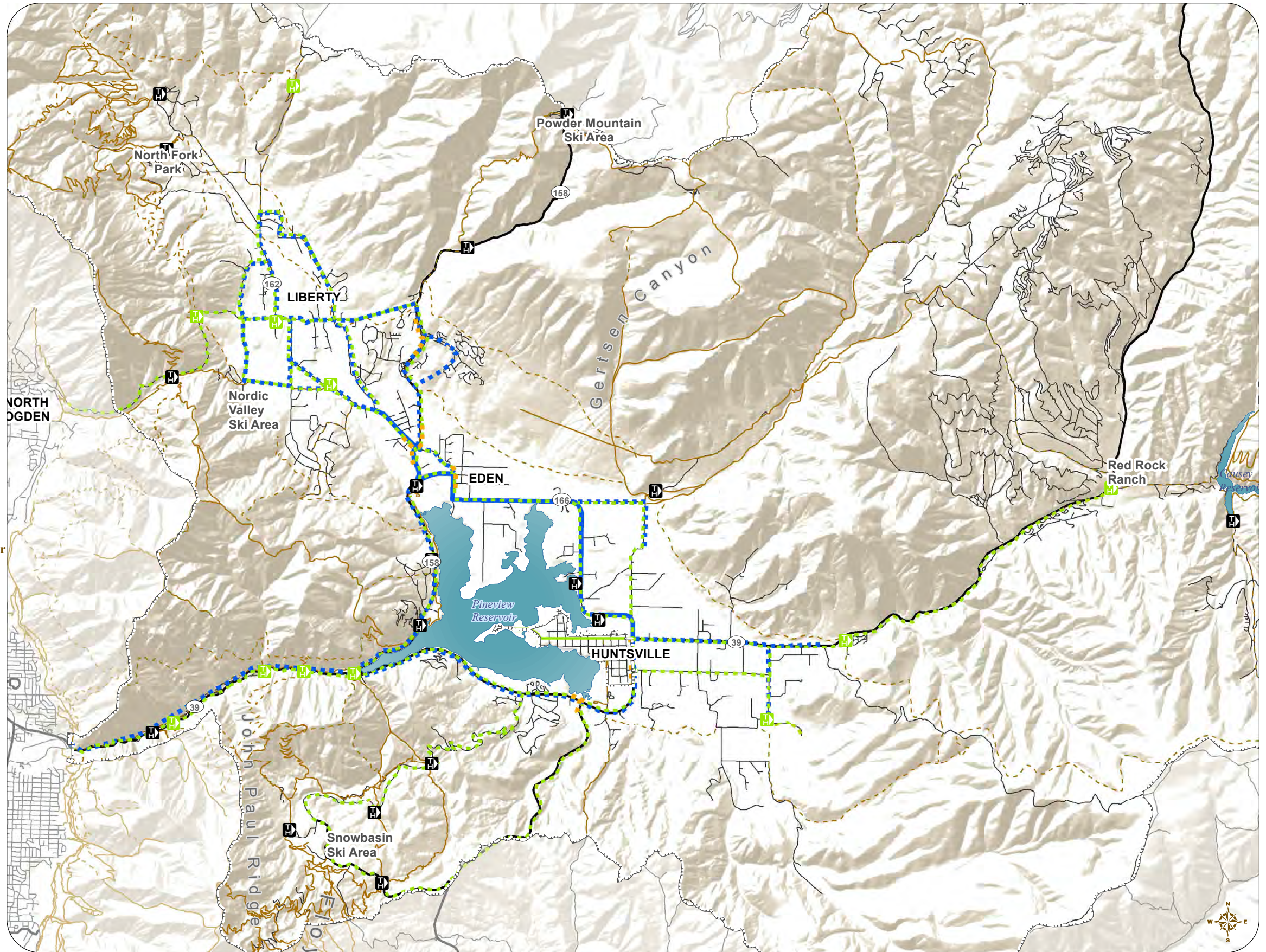
-  Proposed Category 1: Cycle Track with Barrier or Proposed Category 2: Buffered Bike Lane
-  Existing Category 2: Bike Lane
-  Proposed Category 2: Bike Lane
-  Proposed Multiuse Pathway
-  Existing Multiuse Pathway

Note: When considering active transportation and recreation routes, also view the Ogden Valley General Plan Recreation Map. The Recreation Map shows recreational trails.

* The routes indicated on this map as "proposed" with dashed lines are not decided alignments. They are only representative of future connections.

Categories refer to NACTO classifications. Refer to the Ogden Valley General Plan Study for additional information.

Source:
UDOT Open Data, Updated on September 9, 2014
Accessed on October 7, 2014
Weber County
USGS Open Data



Active Transportation

